

VIRGINIA REAL ESTATE PARTNERS

THE CHARLOTTESVILLE REAL ESTATE COMPANY



Pavilion III, Unit #202
425 White Gables



VIRGINIAREALESTATEPARTNERS.COM



An Invitation to Old-World Architecture with 21st Century Appeal

Once home of the historic White Gables Manor, the Condominium was developed by The Robinson Group in 2006. The seven-acre grounds are tucked beyond the old stone wall located along the scenic Virginia byway. White Gables is nestled between Birdwood Golf and Farmington Country Club. With panoramic views of the Blue Ridge Mountains, White Gables is one of the most sophisticated residence communities in Central Virginia. Neo-classical in the Charlottesville tradition, there was careful consideration for European influences to be paired with an enviable situs. The result is a new standard in condominiums. White Gables has a proven record of providing timely retreat for those special visits to the University of Virginia. Maintenance-free living at its best. Come home to Charlottesville, come home to White Gables!



425 White Gables #202

INTERIOR HIGHLIGHTS

- Coffered ceilings, wainscot, rich moldings
- Formal living and dining rooms
- Privacy with split bedroom wings and balconies, with views of Buck Mountain
- Herringbone hardwood flooring
 - Gourmet kitchen with solid surface counters and custom wood cabinets. Designed for versatility and the chef, the kitchen has a cozy breakfast nook for casual dining
- The study/library hosts a wall of built-ins and a wet bar
- Sunny, west-facing orientation for great light
- Large master suite with a sitting area, jetted tub and step-in shower in the attached bath.
- Vented natural gas fireplace with marble surround and a traditional white dentil mantel
- Professionally managed with monthly fees

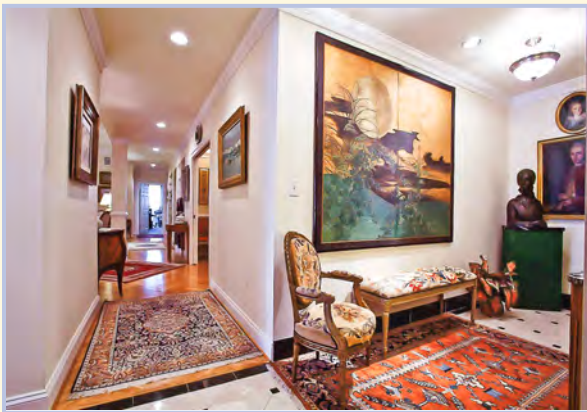


SPECIAL FEATURES

- Trane variable speed heat pump
- 6" exterior studded & insulated walls
- Anderson windows
- Solid wood 6-panel interior doors
- Classic Greek portico and serpentine-brick path lead to the main floor library which is secured by an intercom access panel.
- The Georgian decor in the common area creates a welcoming lobby, library, and mailroom. A gazebo for residents to gather.
- Two dedicated spaces in the covered parking garage with an owners' storage room.
- Commercial grade construction standards
- Copper raised-seamed roof with water proof membrane
- One-way driveway with guest parking
- A stately front portico with classic oversized red brick and stucco accents



Offered at \$725,000



VIRGINIA
 REAL ESTATE PARTNERS
 Power. Strength. Confidence.



University of Virginia BS '81
 University of Denver MS '82
www.uvachildrens.org
curry.virginia.edu
 Uva Alumni Life Member
womenscenter.virginia.edu
 Licensed to Sell Real Estate in Virginia

Sally Du Bose
 Managing Broker /Owner of
 Virginia Real Estate Partners
 Uva Field Hockey/Lacrosse
 Alumna
 Division 3 Official
www.sallydubose.com
 434.981.0289

